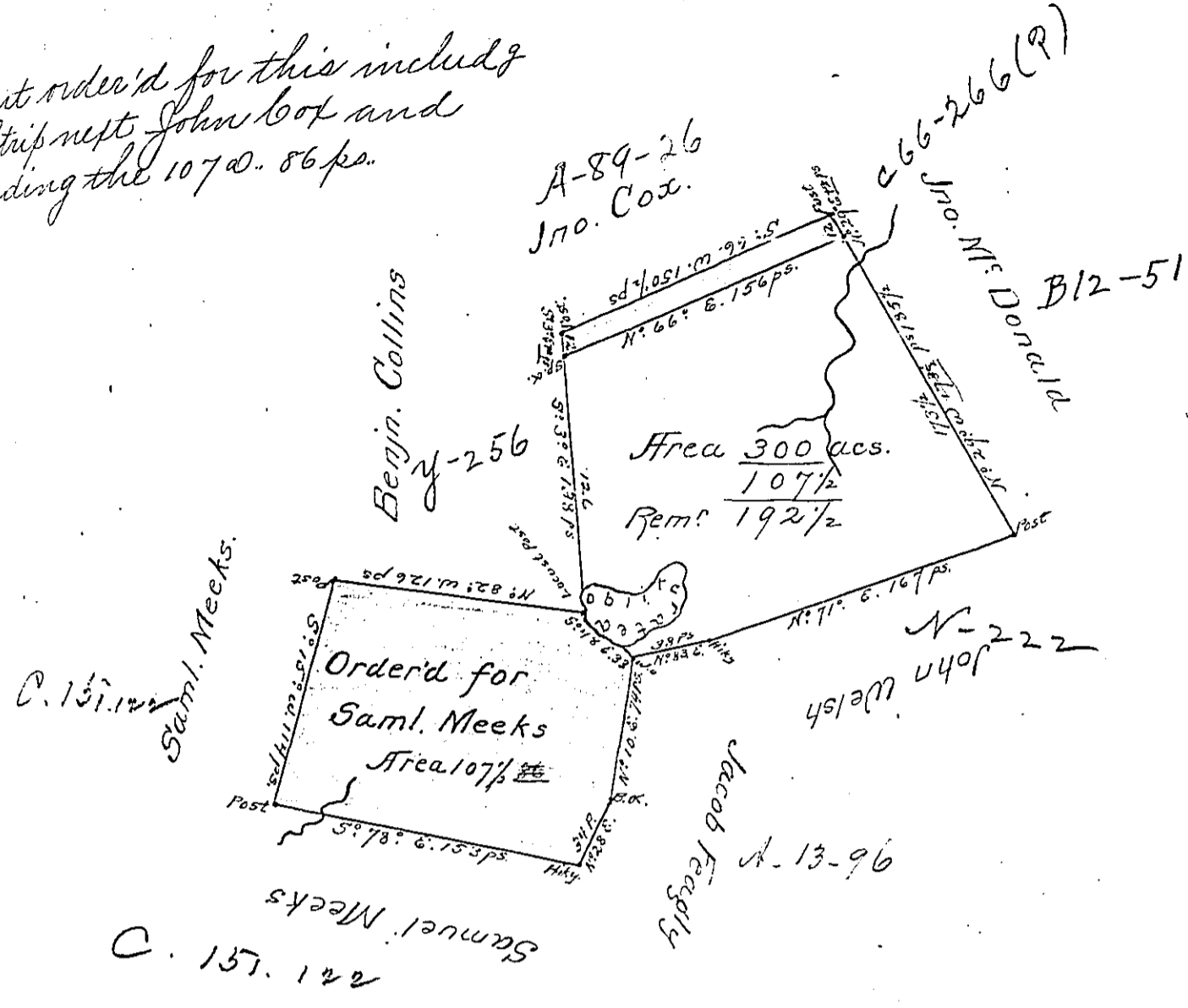


Patent order'd for this includg
the Strip next John Cox and
Excluding the 107^o. 86 ps.



A Draught of a Survey called "Lebanon" situate
on the waters of Peters Creek in Washington County, contg
~~300~~ 192 1/2 acs. and the usual allowce. executed Octr. ye 18th.
1786 in Pursuance of a warrant for 300 acs. granted to
Jno Wallace dated ye 18th. of May 1785.

Note - The coloured spaces are disputed by other men,
the small one contains 10 acs. 129 ps. and has been re-
turn'd for Jno. Cox, the large one contains 107 acs. 86 ps.
and is claimed by Saml. Meeks & left to ye decision of
ye Board of Property

Presley Nevill } Dep.
Mathw. Ritchie }

John Lukene Esqr. S.G.

IN TESTIMONY that the above is a copy of the original remaining on file in
the Department of Internal Affairs of Pennsylvania, made
conformably to an Act of Assembly approved the 16th day of
February, 1833, I have hereunto set my Hand and caused
the Seal of said Department to be affixed at Harrisburg,
this second day of September 1902

James W. Patton
Secretary of Internal Affairs.